

HyTronic® Side Mixer Installation Instructions

For single supply HyTronic faucets requiring deck mounted mixing



Geberit Group

Overview

The Chicago Faucets Series Accessory Mixing Valve enables water temperature control of Chicago Faucets HyTronic electronic sensor faucets. This valve features an ADA- and California OSHPD-compliant wing handle and easy connection to the supply inlet of a HyTronic faucet.

Notice to the Installer

- Read this entire instruction sheet before installing to ensure proper installation.
- Installation must comply with local codes and ordinances.

Pressurized plumbing fixtures shall be installed in accordance with manufacturer's recommendations. The supply piping to these devices shall be securely anchored to the building structure to prevent installed device from unnecessary movement when operated by the user. Care shall be exercised when installing the device to prevent marring the exposed surface.

NOTE: The information in this manual is subject to change without notice.

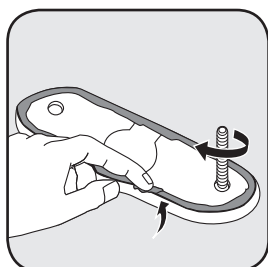
Please leave this manual with the facility manager after completing the faucet installation. This document contains information necessary for routine maintenance and servicing.

NOTE: Before installation, turn off water supplies to existing faucet and remove faucet if replacing. Clean faucet basin and clear away debris. Flush all supply lines before connecting to faucet. Failure to do so can result in debris clogging the inlets and/or cartridges.

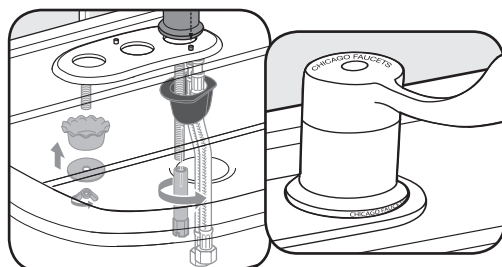
In order to complete the installation, you will need the following:

- Adjustable Wrench
- Mallet
- Plumbers Putty
- Silicone-based Lubricant
- 3mm Hex Key
- Flat Head Screwdriver

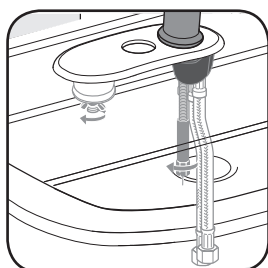
Mounting Side Mixer



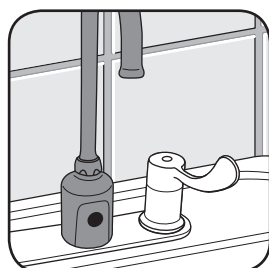
1. When cover plate is required apply plumber's putty to the underside as shown. For units with 8 inch cover plate, attach the threaded rod to the bottom of the cover plate.



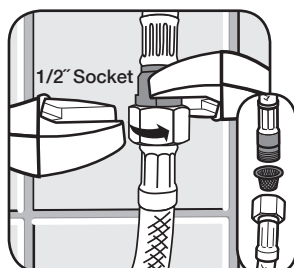
2. Align the hole in the mixer base with the pin on the plate as shown, and feed mounting stud, power cable, and braided hoses through the plate. Hand tighten the mixer to the deck with the large black spacer and long mounting nut. For installations with an 8-inch cover plate, also attach the large cup washer, flat washer, and wing nut to the threaded rod.



3. When the mixer is in the desired position, use a wrench to tighten all mounting hardware.

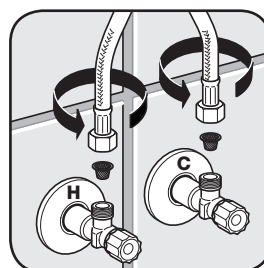


4. Install HyTronic faucet per the instructions provided with the faucet.

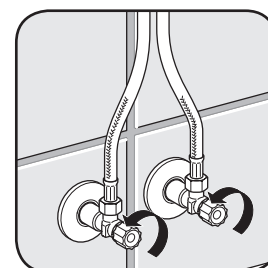


5. Insert a filter screen gasket into female nut of the HyTronic inlet water supply hose. Attach the 3/8" male compression mixed water supply hose from the mixer to the HyTronic water supply inlet hose. Use a wrench to tighten the nut. Do not overtighten. Keep hoses as straight as possible.

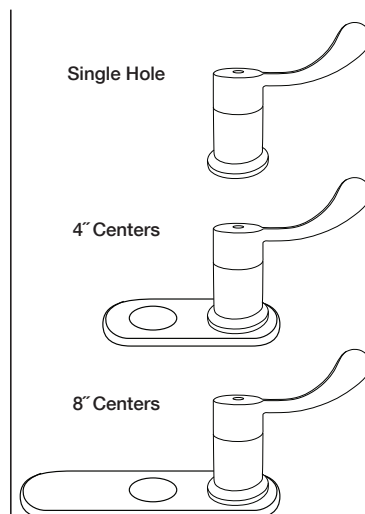
IMPORTANT: the filter screen gaskets seal the connection against leaks and must be installed as shown.



6. Insert the filter screen gaskets into the supply stops. Attach the 3/8" female compression supply hoses from the mixer to the supply stops. Use a wrench to tighten the nuts to the supply stops.



7. Fully open supply valves and check the entire installation for leaks. Note: water may run through spout. **IMPORTANT:** Remove any debris or hardware from the sink before opening the supplies and testing the faucet.



Operating static pressure:
20-125 PSI (138-862 kPa)
Minimum static pressure for mixing:
30 PSI (207 kPa)
COLD water inlet temperature range:
40-80°F (4-27°C)
HOT water inlet temperature range:
100-180°F (38-82°C)
MIXED water outlet range:
40-140°F (4-60°C)
Maximum pressure differential between
Hot & Cold water supplies: 20%
Maximum inlet water supply temperature
differential: 20°F (9°C)

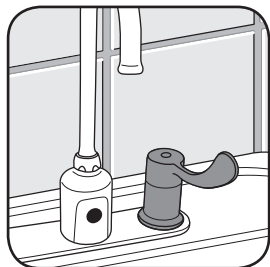
HyTronic® Side Mixer Installation Instructions

(continued)

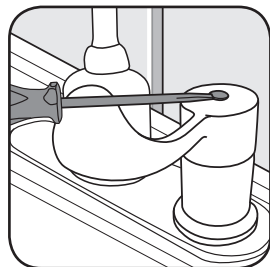


Geberit Group

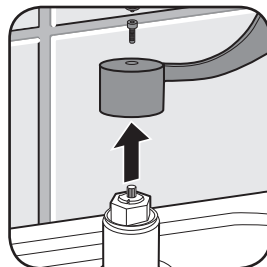
Adjusting Hot Water Limiter



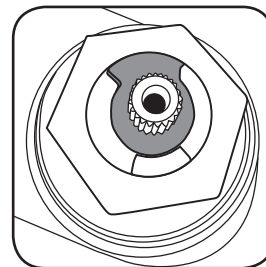
1. Rotate mix handle to full cold position, i.e. 6 o'clock position directly over the sink.



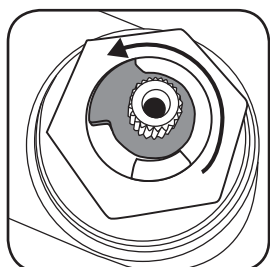
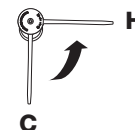
2. Carefully pry off button to expose mounting screw. Loosen and remove mounting screw with 3mm hex key.



3. Lift off handle to expose cartridge stem.

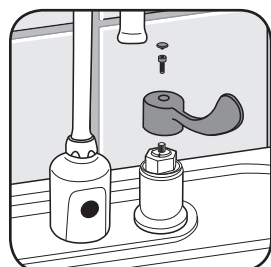
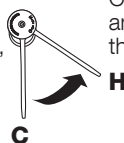


4. Factory preset allows for full hot allowing the handle to move 90° counterclockwise from cold to hot.



5. To restrict maximum hot water temperature from factory setting, lift and rotate limiter counterclockwise.

Note: When hot water limiter is adjusted to less than 100% full hot, mixing handle rotation is less than 90°.



6. Reinstall mix handle in full cold position. Tighten screw with 3mm hex key and reinstall cover button. Check water temperature and repeat steps 3 through 6 if necessary.

WARNING!

Delivery of water to fixtures intended for hand washing is recommended to be controlled by valves listed to ASSE 1070. This fitting is NOT factory preset and can be adjusted to deliver water at temperatures exceeding 110°F (43°C). Further, mechanical mixing valves DO NOT provide automatic control of water temperature. Due to effects of various water conditions, periodic verification of outlet water temperature is required.

Care and Maintenance

All Chicago Faucets fittings are designed and engineered to meet or exceed industry performance standards.

Care should be taken when cleaning this product. Do not use abrasive cleaners, chemicals or solvents as they can result in surface damage. Use mild soap with warm water for cleaning and protecting the surface of Chicago Faucets fittings.

For additional technical assistance, call 800/TEC-TRUE (800-832-8783) or visit our website at chicagofaucets.com.

CHICAGO FAUCETS LIMITED WARRANTY

TO WHOM DOES THIS WARRANTY APPLY? — The Company extends the following limited warranty to the original user only.

WHAT DOES THIS WARRANTY COVER AND HOW LONG DOES IT LAST?

This warranty covers the following Commercial Products:

LIFETIME FAUCET WARRANTY — The "Faucet," defined as any metal cast, forged, stamped or formed portion of the Product, not including electronic or moving parts or other products separately covered by this Limited Warranty or water restricting components or other components, is warranted against material manufacturing defects for the life of the Product.

FIVE YEAR FAUCET WARRANTY — Certain Products and portions of the Product are warranted against material manufacturing defects for a period of five (5) years from the date of Product purchase. Products warranted against material manufacturing defects for a period of five (5) years from the date of Product purchase are referred to by the product numbers 42X, 43X, 15XX and E-Tronic™ - 4X, 5X, 6X, 7X, 8X and 9X. All zinc die cast portions of Product are warranted against material manufacturing defects for a period of five (5) years from the date of Product purchase.

THREE YEAR ELECTRONICS WARRANTY — Electronic components, including the solenoid, are warranted for three (3) years from the date of installation.

FIVE YEAR CARTRIDGE WARRANTY — The "Cartridge", defined as the metal portion of any Product typically referred to by the product numbers containing 1-099, 1-100, 1-310, 377X, 217X and 274X, excluding any rubber or plastic components, is warranted against material manufacturing defects for a period of five (5) years from the date of Product purchase. All Cartridges included in the Company's Single Control or Shower Products also are warranted against material manufacturing defects for a period of five (5) years from the date of Product purchase.

ONE YEAR FINISH WARRANTY - COMMERCIAL — For Products used in commercial applications, the finish of the Product is warranted against material manufacturing defects for a period of one (1) year from the date of Product purchase.

OTHER WARRANTIES — All other Products not covered above are warranted against material manufacturing defects for a period of one (1) year from the date of Product purchase.

Other restrictions and limitations apply. For complete warranty details, call Chicago Faucets Customer Service at 847-803-5000 or visit chicagofaucets.com.

The Chicago Faucet Company
2100 South Clearwater Drive
Des Plaines, IL 60018
Phone: 847/803-5000
Fax: 847/803-5454
Technical: 800/832-8783
www.chicagofaucets.com