

HyTronic® with SSPS User Guide Installation Instructions

For single supply and dual supply HyTronic faucets



a Geberit company

Overview

Chicago Faucets deck mounted faucets feature cast brass bodies and precision cartridges for years of reliable operation. Metering models with adjustable cycle time offer true water savings.

Notice to the Installer

- Read this entire instruction sheet before installing to ensure proper installation.
- Installation must comply with local codes and ordinances.

Pressurized plumbing fixtures shall be installed in accordance with manufacturer's recommendations. The supply piping to these devices shall be securely anchored to the building structure to prevent installed device from unnecessary movement when operated by the user. Care shall be exercised when installing the device to prevent marring the exposed surface.

NOTE: The information in this manual is subject to change without notice.

Please leave this manual with the facility manager after completing the faucet installation. This document contains information necessary for routine maintenance and servicing.

NOTE: Before installation, turn off water supplies to existing faucet and remove faucet if replacing. Clean faucet basin and clear away debris. Flush all supply lines before connecting to faucet. Failure to do so can result in debris clogging the inlets and/or cartridges.

NOTE: Before installing a new ceramic cartridge flush lines completely.

Safety Information

Read this entire user guide to ensure proper installation. Compliance and conformity to local codes and ordinances is the responsibility of the installer.

The following safety notes must always be complied with during handling of this product:

- Make sure there is enough space and lighting available during installation and service.
- Do not modify or convert this Chicago Faucets product yourself. All warranties will be voided.

Important

- Installation may be performed at different times of construction by different individuals. For this reason, these instructions should be left on-site with the facility or maintenance manager.
- Pressurized plumbing fixtures shall be installed in accordance with manufacturer's recommendations. The supply piping to these devices shall be securely anchored to the building structure to prevent installed device from unnecessary movement when operated by the user. Care shall be exercised when installing the device to prevent marring the exposed significant surface.
- Do not use pipe dope.
- Flush all the water supply lines before making connections.

Mounting of Deck Mount Faucet (Single Supply Unit Shown)

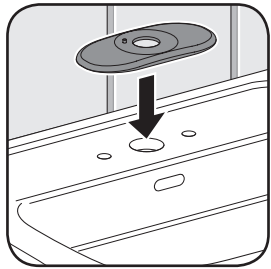
Prerequisites

- Supply valve is installed
- Water supply lines are flushed properly

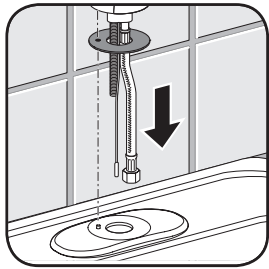
Important

- It is not necessary to unscrew the connection between braided hose and housing to install the product.
- Do not remove protective covering from sensor until starting up faucet operation.
- Do not tighten locknut before step 4 is completed.

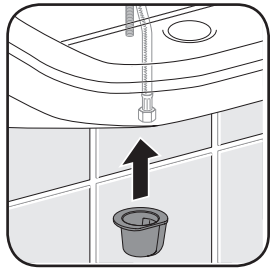
NOTE: If faucet was installed with cover plate, secure with basin washer, flat washer and locknut.



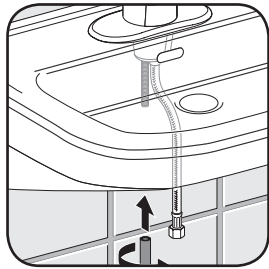
1. Mount cover plate if required. Plumber's putty is recommended to seal cover plate to the sink. Security pin must be located on the left side.



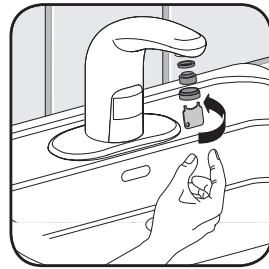
2. Mount gasket and put faucet into sink.



3. Mount bracket from underneath. Place hoses through large opening and mounting rod through small opening. Make sure flange sits securely against surface.



4. Place nut onto mounting rod and tighten with wrench. If faucet was installed with cover plate, secure with basin washer, flat washer and locknut.



5. Install aerator and tighten with aerator key (supplied). Aerator: 1.0 gpm (standard) and optional 0.5 gpm insert. (Use 1.5 gpm for dual supply).

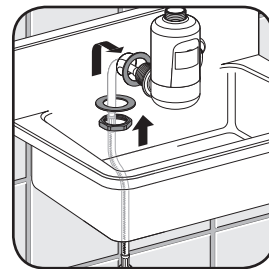
Mounting of Wall Mount Faucet (Single Supply Unit Shown)

Prerequisites

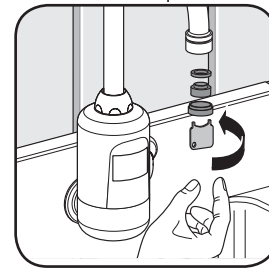
- Supply valve is installed
- Water supply lines are flushed properly

Important

- It is not necessary to unscrew the connection between braided hose and housing to install the product.
- Do not remove protective covering from sensor until starting up faucet operation.



1. Mount gasket, put faucet into opening and tighten. Install aerator and tighten with aerator key (supplied).



2. For gooseneck faucets, tighten spout with wrench. Aerator: 1.0 gpm (standard) and optional 0.5 gpm insert.

Mounting of SSPS Generator

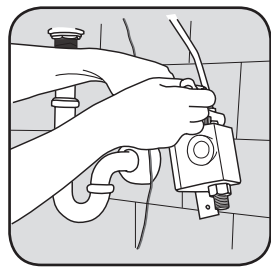
The SSPS Generator comes with all the components needed for installation, however, some tools and supplies are not included.

- Basin Wrench
- Adjustable Wrench
- Hand Drill
- Adjustable Locking Pliers

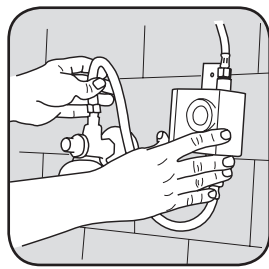
Includes

- SSPS Generator Unit
- Electronics Module and Holder
- Green Power Adapter
- Hose

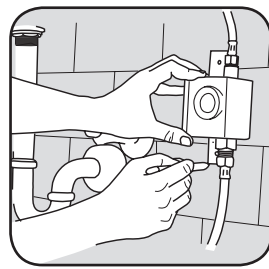
IMPORTANT: Do not use pipe dope on faucet and supply connections. Possible solenoid contamination could occur and will void any warranty.



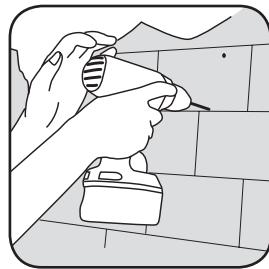
1. Connect SSPS unit. Attach to faucet and install water supply line.



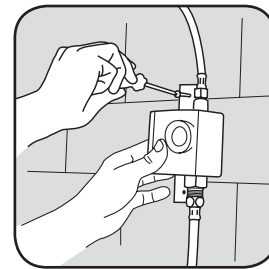
2. Position SSPS under sink. Carefully position to allow connection of water lines and wiring.



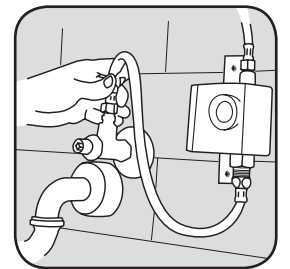
3. Mark holes. Position mounting bracket and mark mounting holes.



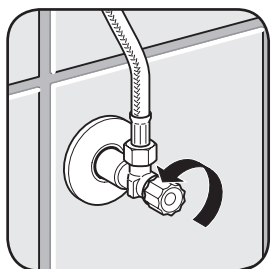
4. Drill holes. Drill holes for screw anchors.



5. Secure SSPS to wall. Insert anchors into holes and mount SSPS unit to wall with supplied screws.



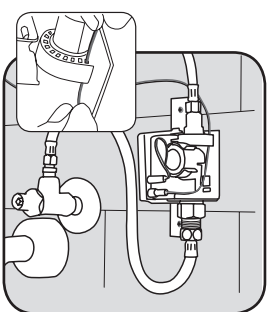
6. Attach inlet hose to supply and turn on water. With water on, check system for leaks.*
*For dual-supply SSPS models, connect the hot water supply line to the SSPS unit and the cold water supply line directly to the faucet.



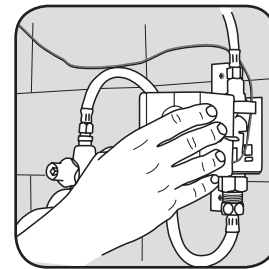
7. Fully open supply valve.



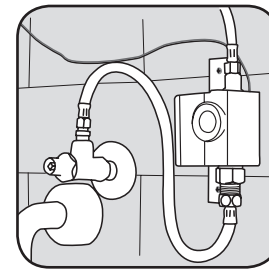
8. Remove all items from sink.



9. Remove cover and connect faucet to SSPS and secure into wire harness.



10. Attach the cover. Faucet is ready to run through programming sequence.



11. Remove protective covering from sensor.

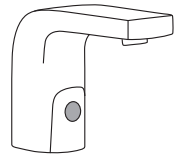
Wait for 15 seconds for faucet to calibrate to its environment.



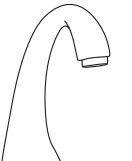
Traditional Lavatory



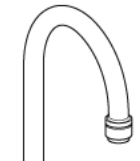
Contemporary Lavatory



Edge



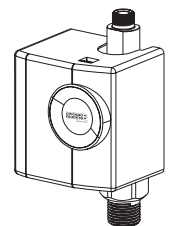
Curve



Gooseneck



Wallmount

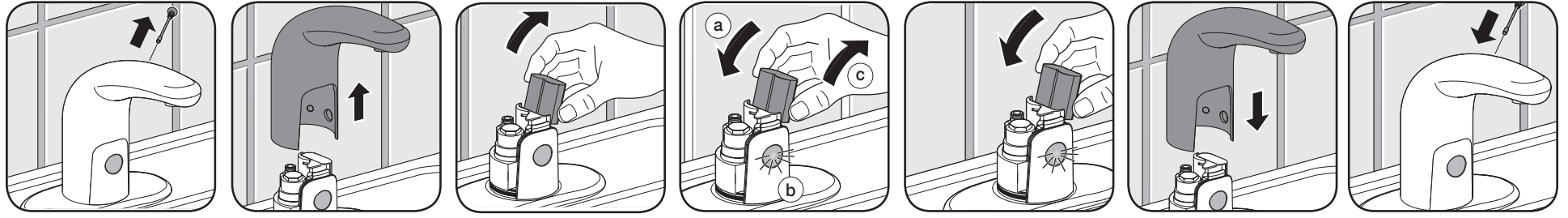


SSPS Generator

Enabling “Manual Setting” Mode

A battery model is shown in the following example. These instructions apply to all models. After 30 minutes, the “Manual Setting” mode will be disabled automatically and all settings will be saved.

Prerequisite: Water supply valve is open



1. Remove shut-off screw
 2. Remove protective covering from sensor.
 3. Remove housing vertically
 4. The following procedure (a, b, c) must be done three (3) times in a row.
 - a - Reinsert green adapter
 - b - LED lights up
 - c - Remove green adapter immediately after LED switches off
 5. Insert green adapter
 6. Mount housing vertically
 7. Mount shut-off screw
- Result — The “Manual Setting” Mode is now enabled.

CARE AND MAINTENANCE INSTRUCTIONS

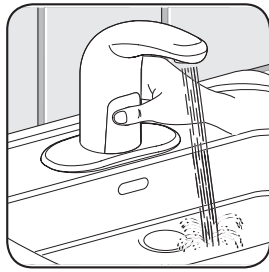
The following instructions are described in this section:

- Activating Cleaning Mode
- Cleaning or Replacing Inlet Filter
- Cleaning or Replacing Outlet

Activating Cleaning Mode

In order to set the cleaning mode, the faucet needs to be have been set once into the “Manual Setting” mode. See “Manual Setting” instructions. When cleaning mode is activated, the faucet will be inoperable for 90 seconds.

1. Fully cover sensor with hand, until waterflow stops. (This will take approximately 5 seconds)
 2. Remove hand
- Result — Cleaning mode is now activated.

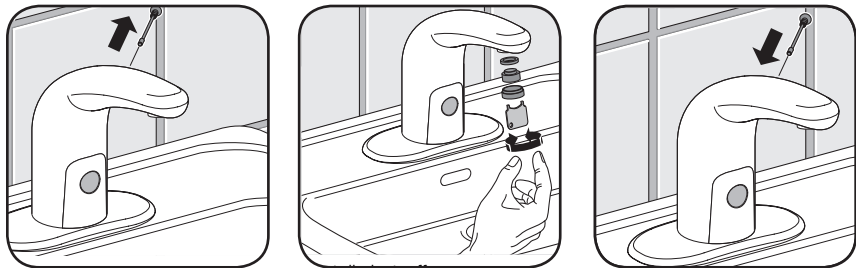


Cleaning or Replacing Inlet Filter



1. Close supply valves
 2. Disconnect braided hoses and clean or replace filter (for a new filter, see “common replacement parts”)
 3. Connect braided hoses with filter to supply valves and fully open.
- Result — The filter is now cleaned or replaced.

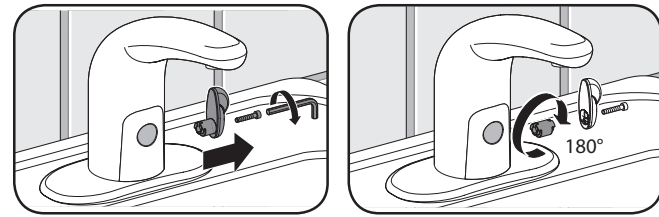
Cleaning or Replacing Aerator



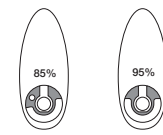
1. Remove shut-off screw
 2. Remove outlet with vandal resistant wrench supplied with the faucet. Clean or replace outlet, then reinstall
 3. Install shut-off screw
- Result — The outlet is now cleaned or replaced.

Adjusting Hot Water Limiter (External Mixer)

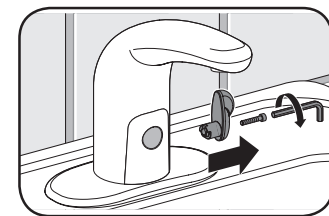
A traditional lavatory faucet is shown as an example. These instructions apply to all models with external mixers. The proportion of hot water can be switched from approximately 85% to 95% (or reverse) depending upon inlet water pressures and temperatures. The default setting is 85%.



1. Remove mixer handle
2. Carefully pull out hot water limiter from handle (using pliers) and reverse by 180°



Settings of Hot Water Limiter (View from placement in mixer handle)

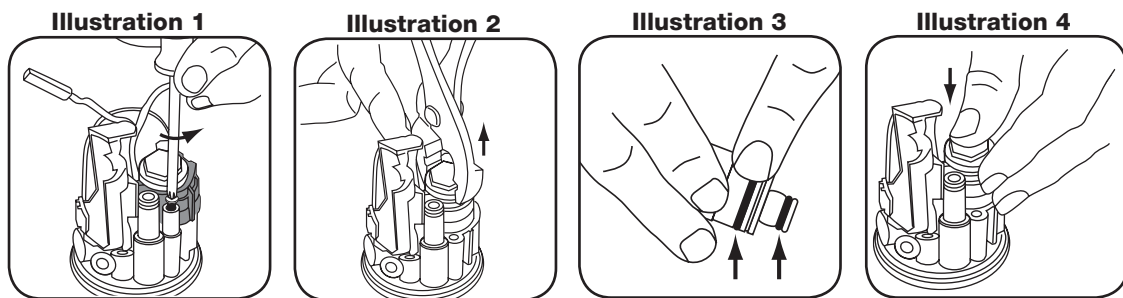


3. Mount mixer handle

HyTronic® ECAST® Solenoid Replacement Instructions

These instructions illustrate how to correctly install a replacement solenoid for HyTronic ECAST faucets that contain an “AB” in the model number, i.e. 116.201.AB.1 electronic faucets.

1. Shut off water supply.
2. Remove top spout or body housing to access the internal components.
3. Remove three HyTronic solenoid bonnet retainer screws and retainer to access the solenoid. (Illustration 1)
4. Unplug solenoid wire connector from electronic module.
5. Remove solenoid by pulling in an upward motion. (Illustration 2)
6. Remove any water deposits or debris that may be present in the waterway body cavity. When servicing existing solenoid, be sure to clean filter screen on solenoid.
7. Lubricate O-rings on solenoid valve with rubber safe lubricant. (Illustration 3)
8. Insert solenoid into body cavity and push down until fully seated. (Illustration 4)
9. Feed the solenoid wire connector through the bonnet retainer and reconnect to electronic module.
10. Align holes on bonnet retainer with solenoid retainer and reinstall screws and tighten screws to 10 in/lbs of torque.
11. Reinstall top spout or body housing.
12. Turn on water and allow faucet to reset before operating.



Care and Maintenance

All Chicago Faucets fittings are designed and engineered to meet or exceed industry performance standards. Care should be taken when cleaning this product. Do not use abrasive cleaners, chemicals or solvents as they can result in surface damage. Use mild soap with warm water for cleaning and protecting the surface of Chicago Faucets fittings.

For additional technical assistance, call 800/TEC-TRUE (800-832-8783) or visit our website at chicagofaucets.com.

CHICAGO FAUCETS LIMITED WARRANTY

TO WHOM DOES THIS WARRANTY APPLY? — The Company extends the following limited warranty to the original user only.

WHAT DOES THIS WARRANTY COVER AND HOW LONG DOES IT LAST?
This warranty covers the following Commercial Products:

LIFETIME FAUCET WARRANTY — The “Faucet,” defined as any metal cast, forged, stamped or formed portion of the Product, not including electronic or moving parts or other products separately covered by this Limited Warranty or water restricting components or other components, is warranted against material manufacturing defects for the life of the Product.

FIVE YEAR FAUCET WARRANTY — Certain Products and portions of the Product are warranted against material manufacturing defects for a period of five (5) years from the date of Product purchase. Products warranted against material manufacturing defects for a period of five (5) years from the date of Product purchase are referred to by the product numbers 42X, 43X, 15XX and E-Tronic® - 4X, 5X, 6X, 7X, 8X and 9X. All zinc die cast portions of Product are warranted against material manufacturing defects for a period of five (5) years from the date of Product purchase.

THREE YEAR ELECTRONICS WARRANTY — Electronic components, including the solenoid, are warranted for three (3) years from the date of installation.

FIVE YEAR CARTRIDGE WARRANTY — The “Cartridge”, defined as the metal portion of any Product typically referred to by the product numbers containing 1-099, 1-100, 377X, 217X and 274X, excluding any rubber or plastic components, is warranted against material manufacturing defects for a period of five (5) years from the date of Product purchase. All Cartridges included in the Company’s Single Control or Shower Products also are warranted against material manufacturing defects for a period of five (5) years from the date of Product purchase.

ONE YEAR FINISH WARRANTY – COMMERCIAL — For Products used in commercial applications, the finish of the Product is warranted against material manufacturing defects for a period of one (1) year from the date of Product purchase.

OTHER WARRANTIES — All other Products not covered above are warranted against material manufacturing defects for a period of one (1) year from the date of Product purchase.

Other restrictions and limitations apply. For complete warranty details, call Chicago Faucets Customer Service at 847-803-5000 or visit chicagofaucets.com.

The Chicago Faucet Company
2100 South Clearwater Drive
Des Plaines, IL 60018
Phone: 847/803-5000
Fax: 847/803-5454
Technical: 800/832-8783
www.chicagofaucets.com