

CHICAGO FAUCETS 

a Geberit company

2100 South Clearwater Drive
Des Plaines, IL 60018
Phone: 847-803-5000
Fax: 847-803-5454
www.chicagofaucets.com

FOR TECHNICAL ASSISTANCE
1-800-TEC-TRUE (1-800-832-8783)

REPAIR PARTS

BY: SID DATE: 11-17-11

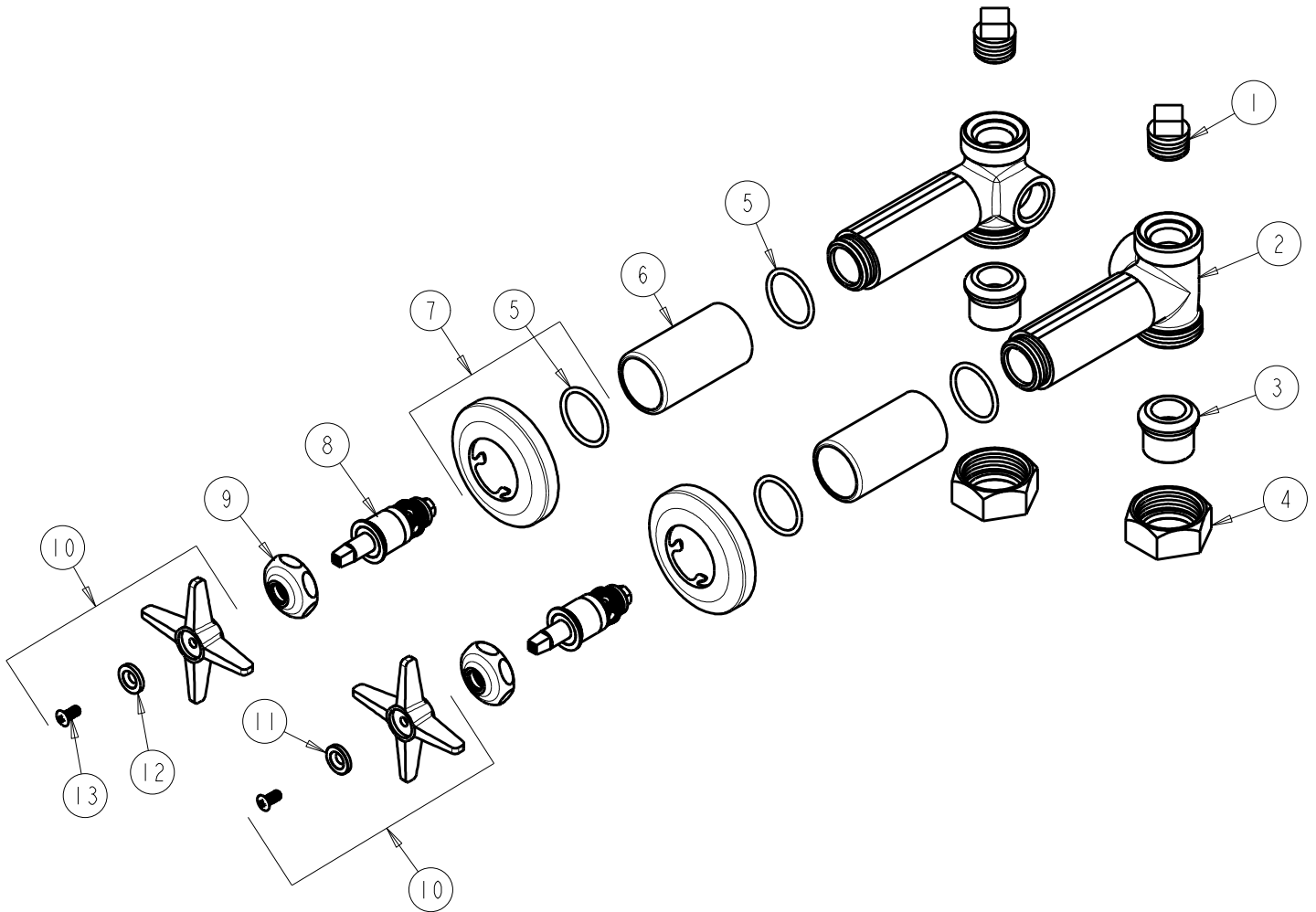
CHK: *[Signature]* REV:

FITTING NO.

769-PRCP

SUBMITTED MODEL NO.

ITEM NO.



ITEM	PART NO.	DESCRIPTION	ITEM	PART NO.	DESCRIPTION
1	234-032JKRCF	1/2 NPT PLUG	8	217-XTLHJKNF	CARTRIDGE, SLO-COMPRESSION (LH)
2	-----	VALVE BODY (NOT SOLD SEPARATELY)	9	1-214JKCP	CAP
3	177-003JKCP	UNION TAILPIECE	10	633-PRJKCP	4-ARM HANDLE ASSEMBLY
4	177-002JKCP	UNION NUT	11	633-123JKNF	INDEX BUTTON (BLUE)
5	5235-107JKNF	O-RING	12	633-023JKNF	INDEX BUTTON (RED)
6	5235-106JKCP	SLEEVE	13	420-010JKRCF	SCREW, 10-32 UNC PH 1/2
7	633-201JKCP	FLANGE & O-RING			