



a Geberit company

2100 South Clearwater Drive
Des Plaines, IL 60018
Phone: 847-803-5000
Fax: 847-803-5454
www.chicagofaucets.com

REPAIR PARTS

BY: SID DATE: 10-25-11

CHK: *[Signature]* REV: 10-14-14

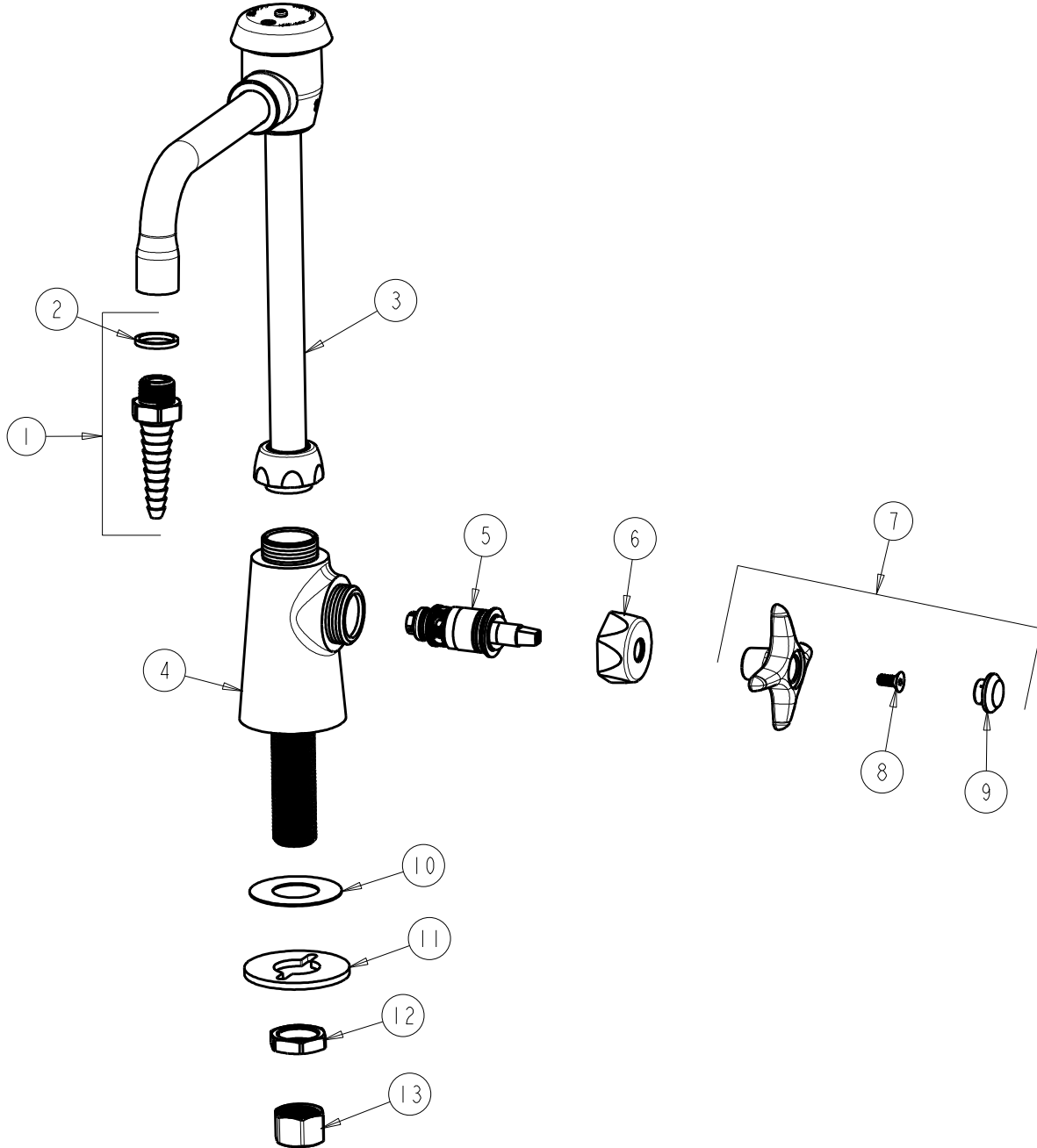
FITTING NO.

928-HWCP

SUBMITTED MODEL NO.

ITEM NO.

FOR TECHNICAL ASSISTANCE
1-800-TEC-TRUE (1-800-832-8783)



ITEM	PART NO.	DESCRIPTION	ITEM	PART NO.	DESCRIPTION
1	E7JKCP	SERRATED HOSE NOZZLE	8	420-020JKNF	SCREW, 1/8 FLAT HEX HEAD X 1/2
2	229-003JKABNF	WASHER	9	216-128JKNF	BUTTON 'HW'
3	GN2BVBJKABCP	SPOUT, VACUUM BREAKER	10	333-103JKNF	RUBBER WASHER
4	-----	VALVE BODY (NOT SOLD SEPARATELY)	11	807-112JKNF	WASHER
5	217-XTLHJKABNF	CARTRIDGE, SLO-COMPRESSION (LH)	12	49-004JKRBF	LOCKNUT
6	444-005JKCP	CAP	13	49-005JKRBF	COUPLING NUT
7	204-HWJKCP	HANDLE ASSEMBLY			